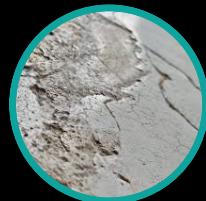
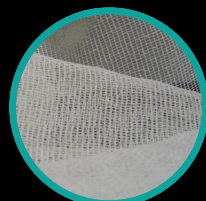
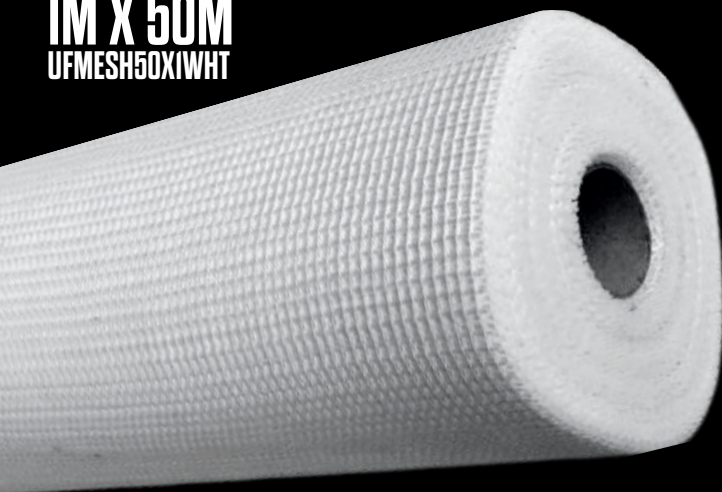


**WALTHER
STRONG®**

ULTRA-FINE VENETIAN MESH

1M X 50M
UFMESH50X1WHT



PERFECT FOR VENETIAN PLASTERING

THIS ULTRA-FINE MESH IS THIN, DURABLE AND GREAT TO USE WITH MICROCEMENT



REINFORCED



DURABLE



EXTRA FINE MESH

YOUR NEAREST MERCHANT:

WALTHER STRONG®

Walther Strong Ultra Fine Mesh is a reinforcing mesh designed specifically for use with Venetian plasters. Whether you're applying traditional lime or modern acrylic plasters, this mesh acts as a powerful anti-crack system, adding essential strength and stability to your basecoat. It is also perfect for use on traditional heritage plastered walls, where added reinforcement is crucial without compromising authenticity.

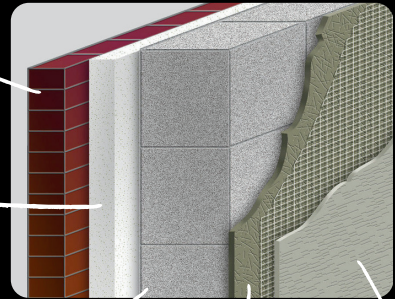
Lightweight, flexible, and incredibly strong, this mesh is easy to cut or tear by hand, making it versatile and ideal for even the most intricate plastering jobs—from large surfaces to tight corners. It's also suitable for use in high-moisture areas, including bathrooms and around basins, offering durability where it's needed most.



External Wall

Insulation

Internal Wall



Render/Plaster

ULTRA-FINE MESH

Great to use with
microcement

- ✓ Helps achieve a premium finish
- ✓ Covers internal cracks & creases
- ✓ Easy to cut & modify
- ✓ Approved for use with all major plasters and renders
- ✓ Compliments Venetian plastering
- ✓ Great to use with microcement

YOUR NEAREST MERCHANT: