

# Interior Liquid Tape®



## 2.5LTR / 1LTR / 250ML Range



- ✓ Paint & Peel
- ✓ Masking difficult shapes
- ✓ Clean removal
- ✓ Masking rough surfaces
- ✓ Forms a strong, flexible membrane
- ✓ Excellent protective mask



do you have any photos of your projects? - tag us @waltherstrongandco

enquiries@waltherstrongandco.com

01780 437222

www.waltherstrong.com



WALTHER STRONG



do you have any photos of your projects? - tag us @waltherstrongandco

enquiries@waltherstrongandco.com

01780 437222

www.waltherstrong.com



WALTHER STRONG

01780 437222

www.waltherstrong.com

- ✓ Masking rough surfaces
- ✓ Forms a strong, flexible membrane
- ✓ Excellent protective mask



WALTHER STRONG

SCAN TO WATCH  
A VIDEO



STRONG & FLEXIBLE



EASY TO APPLY



STICKINESS



CLEAN RELEASE



PROTECTION

INNOVATION  
TECHNOLOGY  
AWARD

# CREATE A PROTECTIVE, PEELABLE COATING WITH INTERIOR LIQUID TAPE®

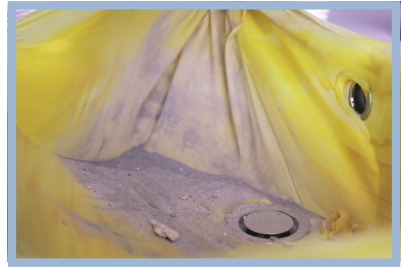
AVAILABLE IN STORE OR ONLINE



### 1 - Prepare Surface [remove all debris & dust]



### 3 - Leave to Fully Dry [and then repeat process for a second coat]



### 2 - Apply Liquid Tape [The thicker the layer the easier to remove]

### 4 - Simply Peel Off! [when no longer needed - just peel straight off]



**250ML**  
**WSLT-PRO250**



**1 LTR**  
**WSLT-PRO1**



**2.5 LTR**  
**WSLT-PRO2.5**

## Innovative Easy to Apply & Remove Protective Masking Liquid.

- Paint & Peel
- Masking difficult shapes
- Clean removal
- Masking rough surfaces
- Forms A Strong, Flexible Membrane
- Excellent protective mask

Do not apply or leave in direct sunlight. For interior use only - Always test on intended surface/substrate before use.